

Palm Beach County Coastal Resources Management



Michael Stahl and Andy Studt
Palm Beach County

Dept. of Environmental Resources Management

Balancing the needs of :

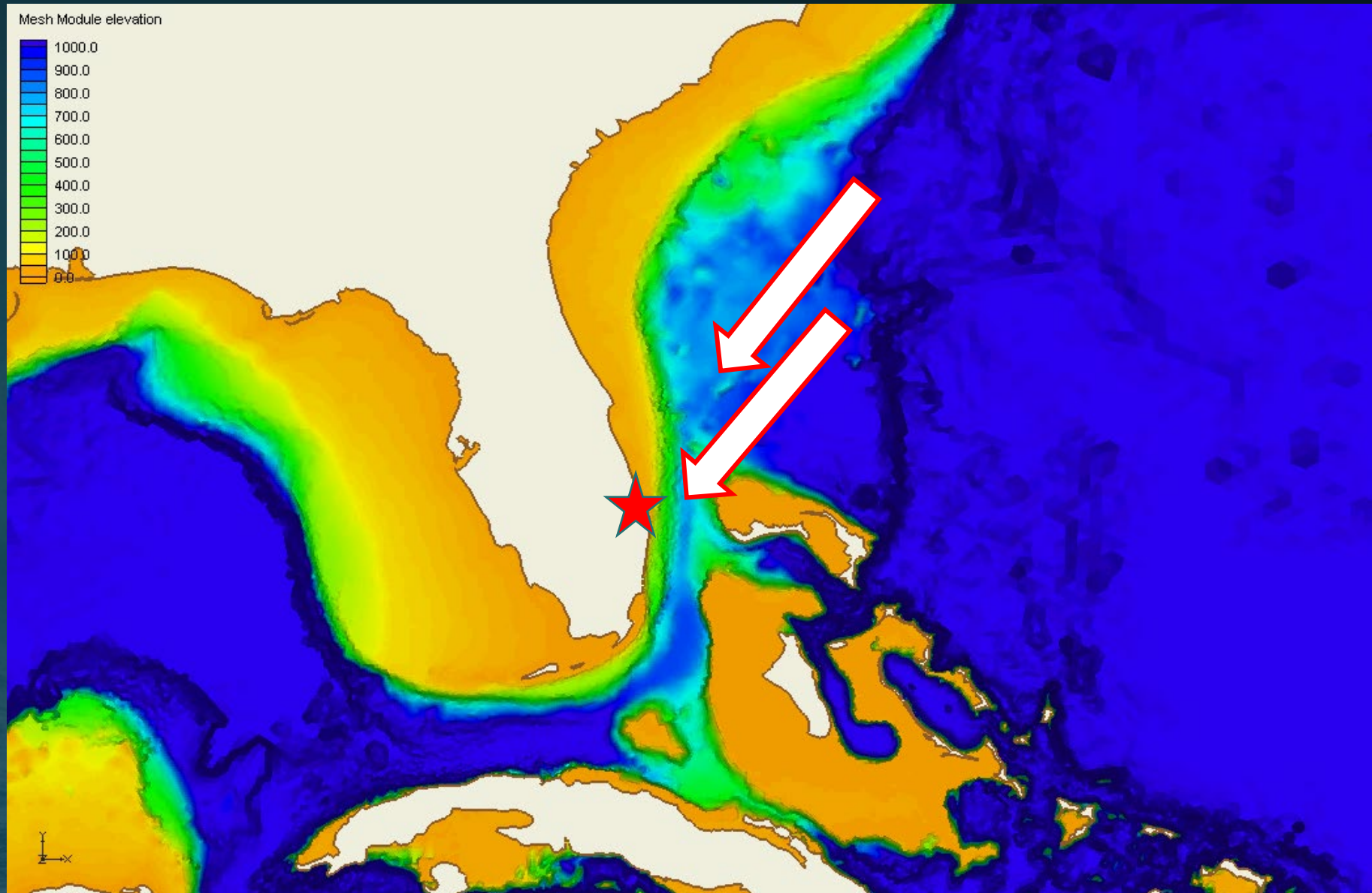
- 1.5 million residents and
- 8 million tourists

While protecting:

- 47 miles of coastline
- 2 million sea turtle hatchlings
- >\$8 billion in beachfront real estate
- Extensive nearshore hardbottom



Palm Beach County's Unique Coastline



3 Pillars of Coastal Projects

- 33 miles designated by the State as critically eroded
- 26 miles publicly accessible
- Extensive nearshore hardbottom and critical sea turtle nesting habitat



Coastal Management Strategies

Inlet Bypassing



Beach Nourishment



Dune Restoration

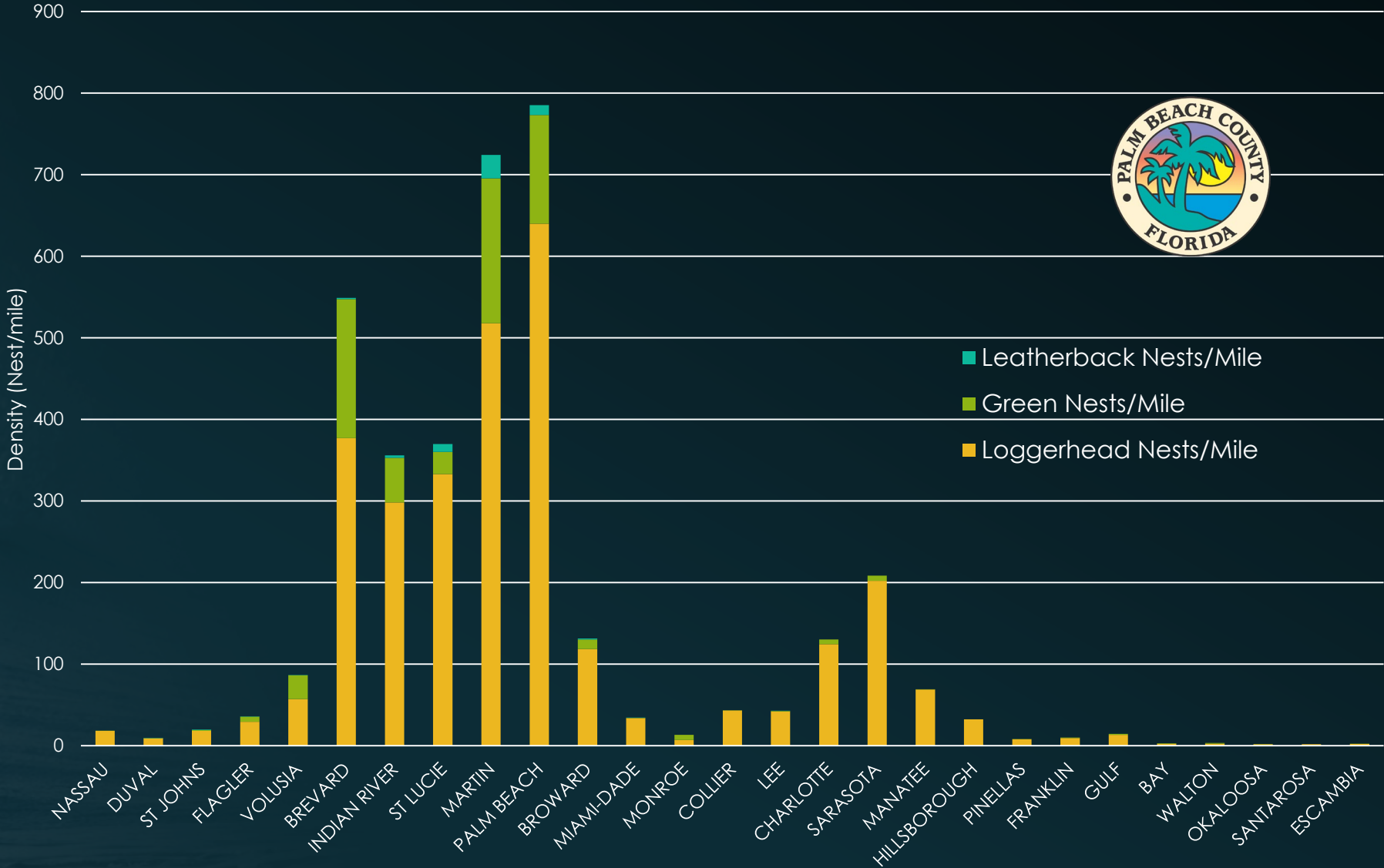


Erosion Control Structures



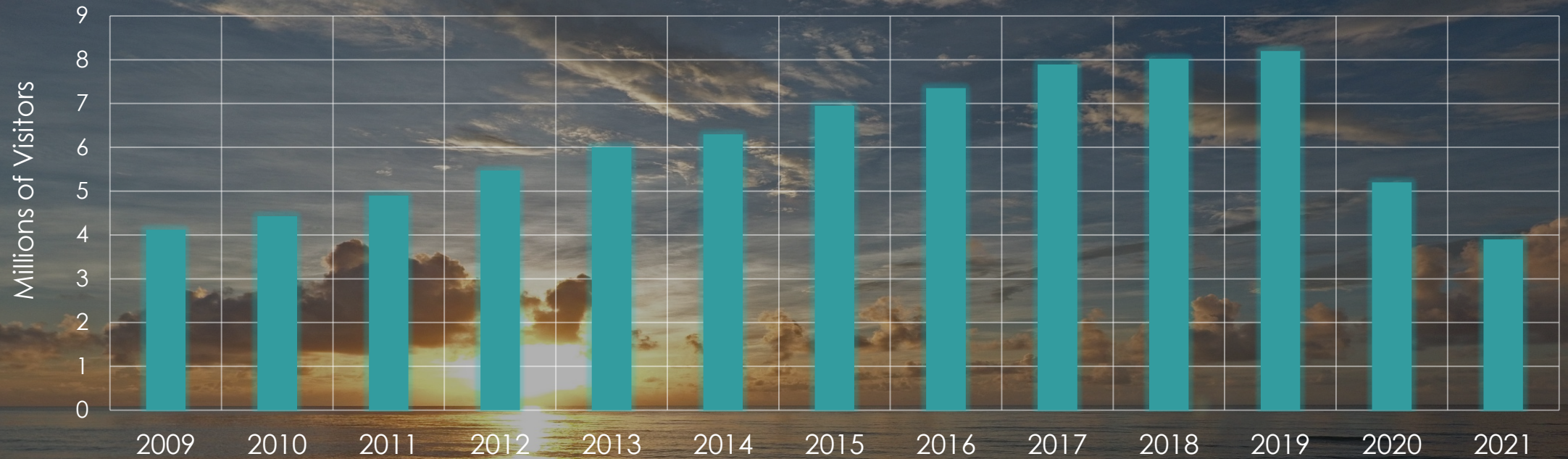
Critical Sea Turtle Nesting Habitat

2020 Sea Turtle Nesting Density by County (Nests/mile)



Economic Impact

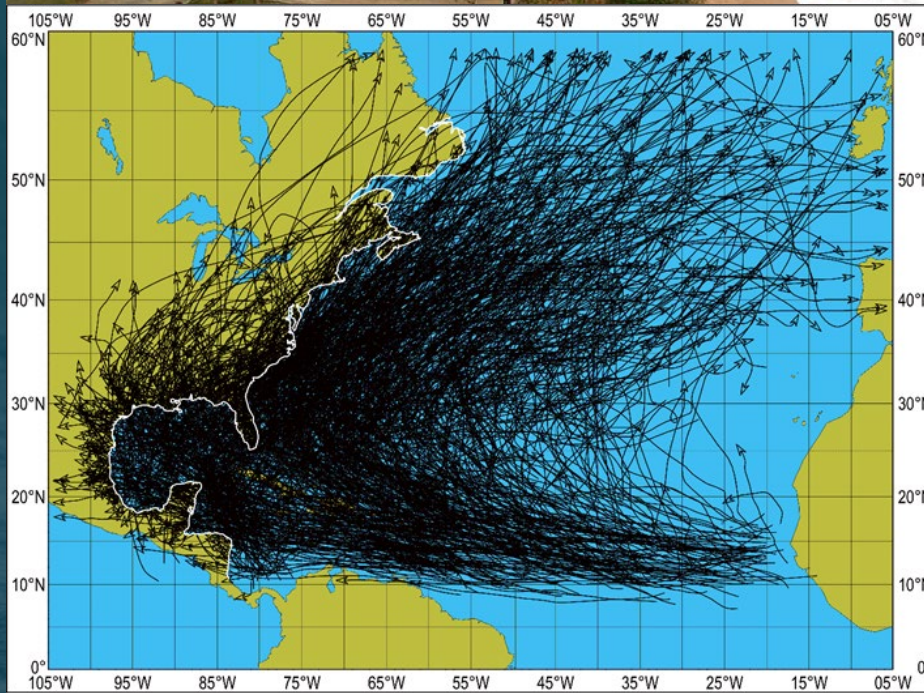
Palm Beach County Visitation History



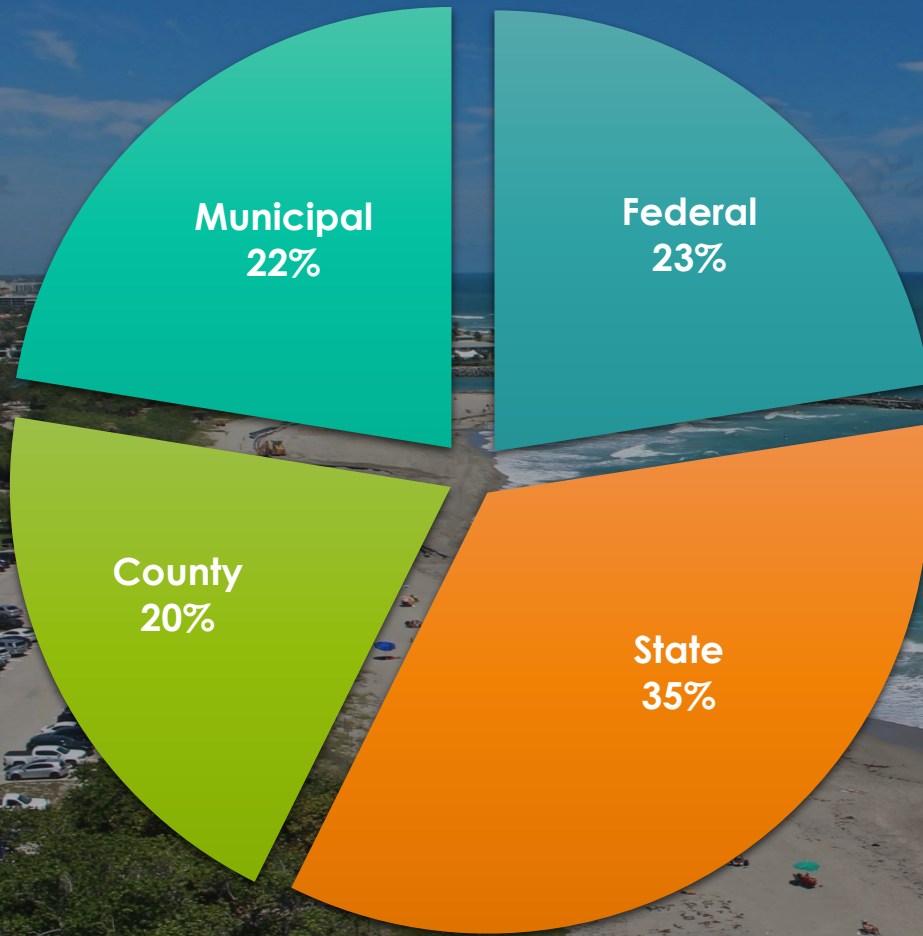
- Beaches are the #1 attraction for visitors to Palm Beach County
- 95% increase in visitation between 2009 and 2019
- Total economic impact of tourism in PBC is \$8 Billion annually



Storm Damage Reduction



Typical Countywide Beaches Funding

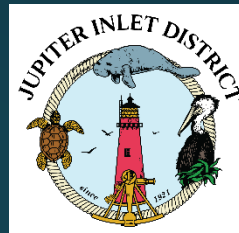
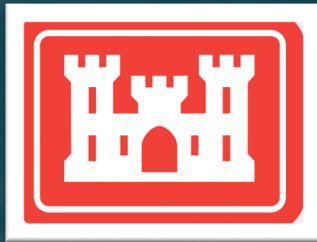


• Funding sources:

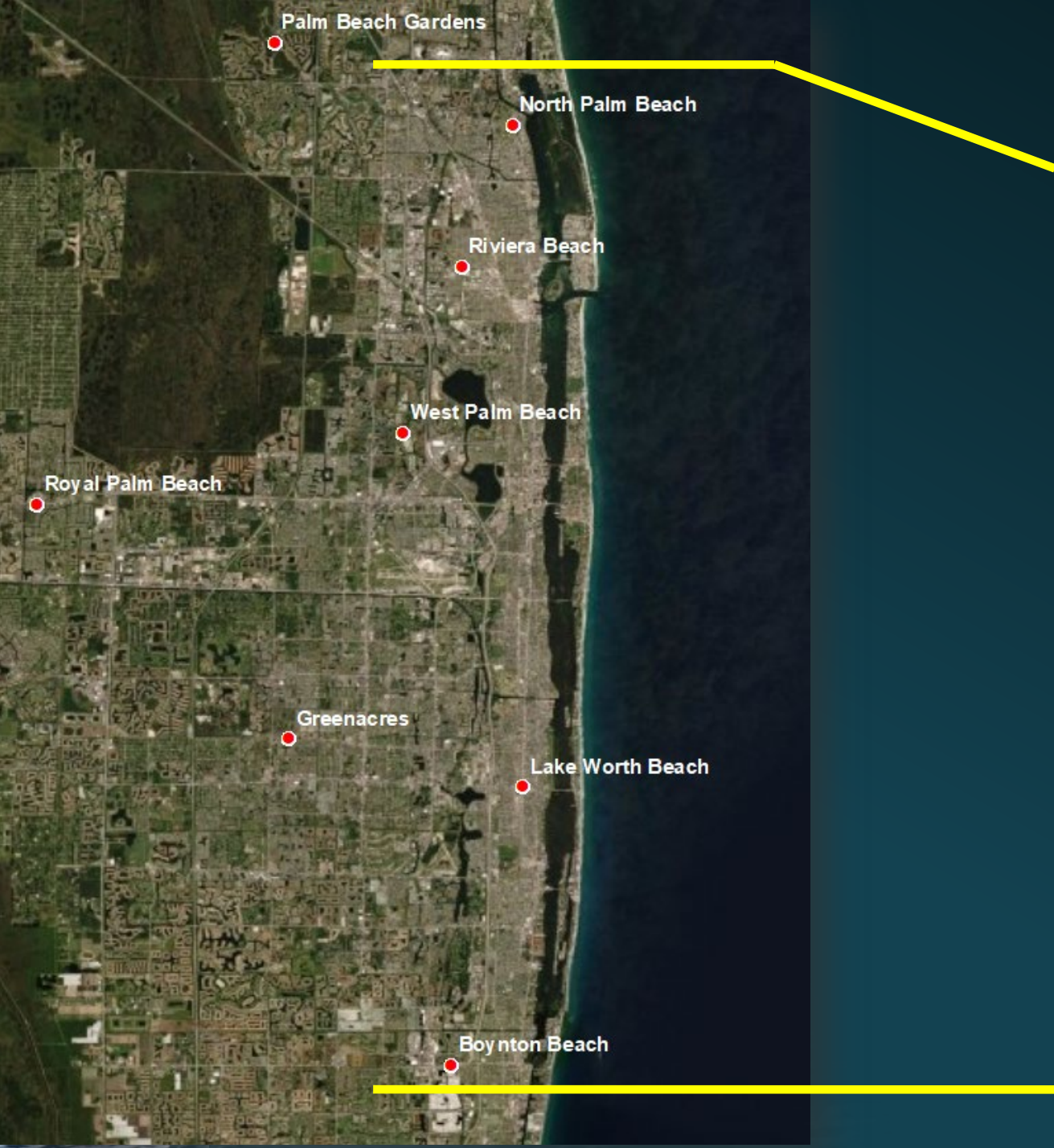
- Federal (USACE, FEMA)
- State (FDEP)
- County (TDC)
- Local Municipalities



Collaboration and Cooperation



Beyond the Beaches



LAKE WORTH LAGOON BY THE NUMBERS



Living Shorelines and Eco-Islands



Before



After



LIVING SHORELINE AND HABITAT RESTORATION PROJECTS

FROM 2014-2019



+6 ADDITIONAL RESTORATION PROJECTS planned or underway in the next 3 years

Building Resilience Through Restoration

